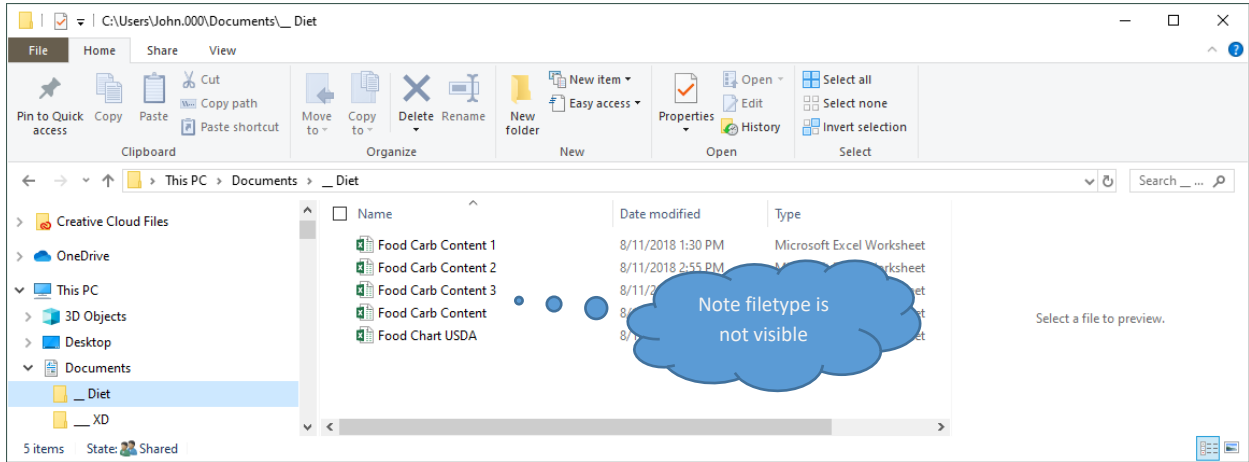
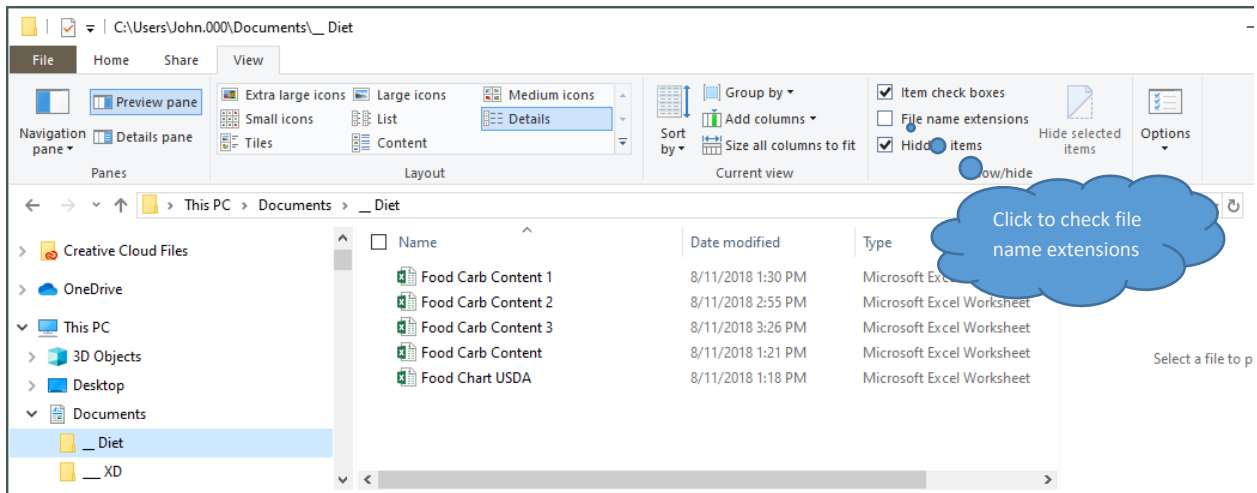


How to declare which app is launched based on filetype

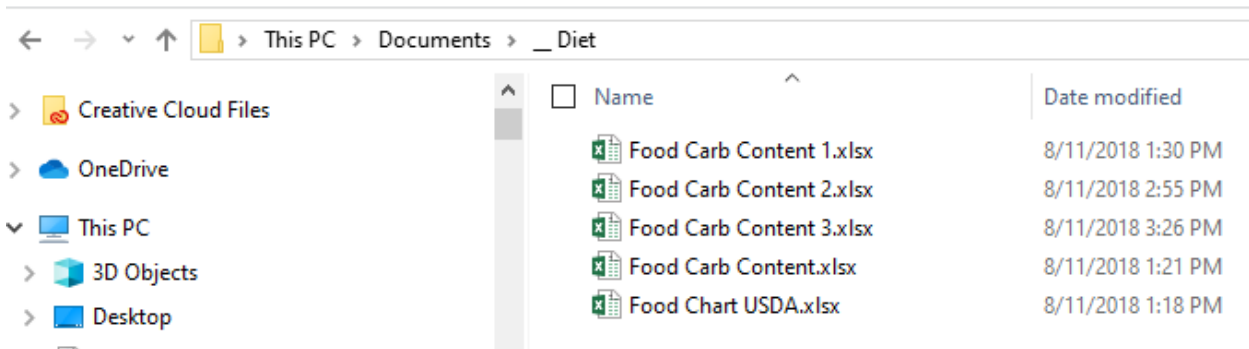
First start File Explorer (windows key + e) and make sure the filetype extension is visible when listing file details:



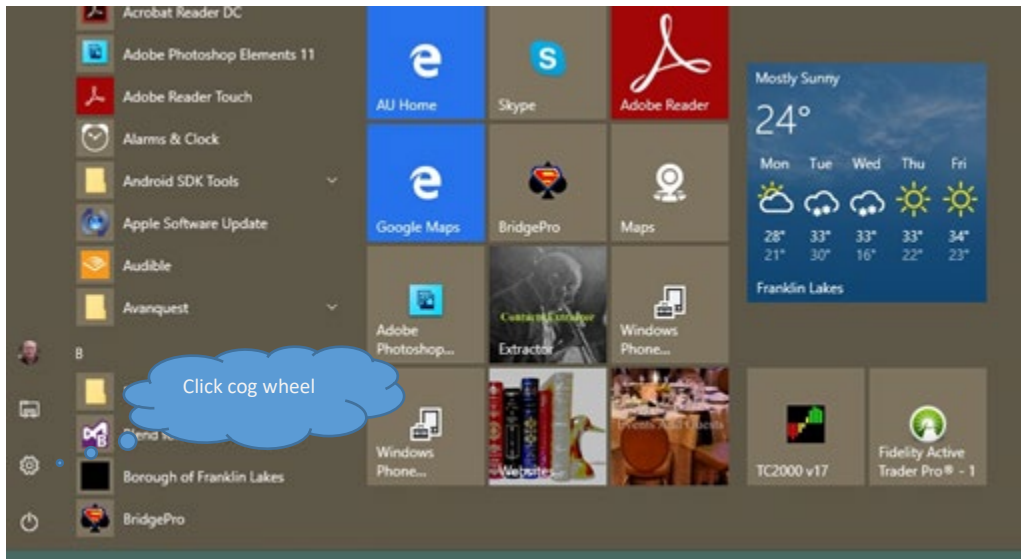
Click on menu item VIEW



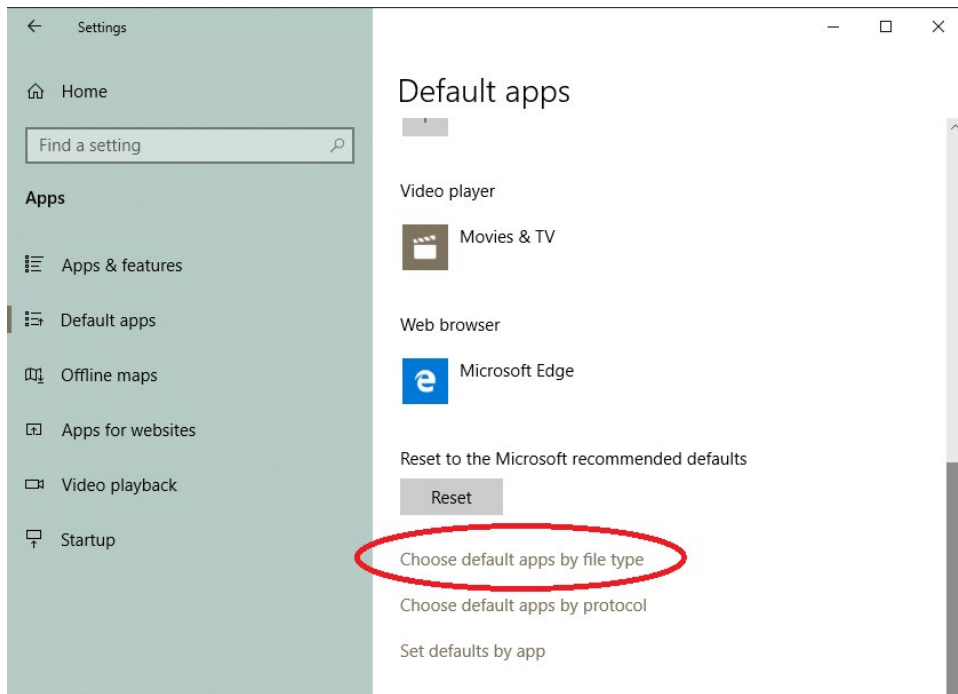
The file extension "xlsx" is visible (a MS Excel file most recent version)



Click the cog wheel to launch settings

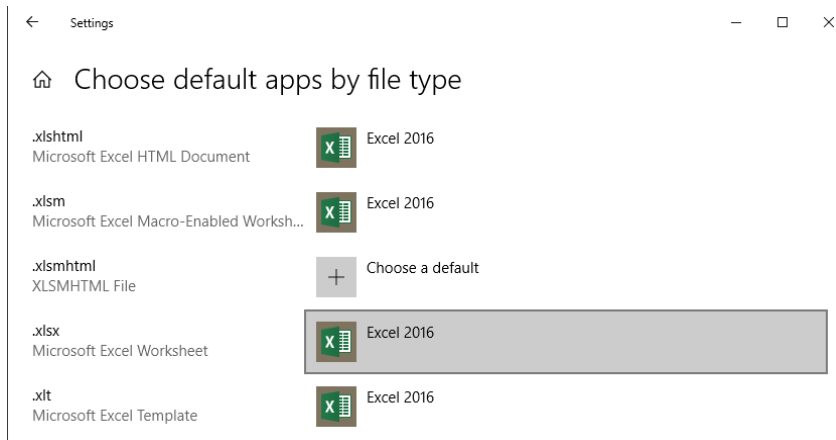


Then click APPS on the home screen then Default Apps to get:



Scroll down right side until you can click "Choose default apps by file type"

This displays the following:



Note that I had to scroll down until the filetype xlsx was found. You see that Excel 2016 is launched when a file with filetype xlsx is clicked or opened. Notice that a + button indicates that you can select a default (one has not been assigned yet).

To change the default – in this example click “.jpg” then click “Paint” the default App launched. A list of Apps to choose from appears. Scroll down and click the APP you want to have launched.

